



SUPPORT THE MSU RADIOLOGY *Healing Gardens* WITH A COMMEMORATIVE BRICK

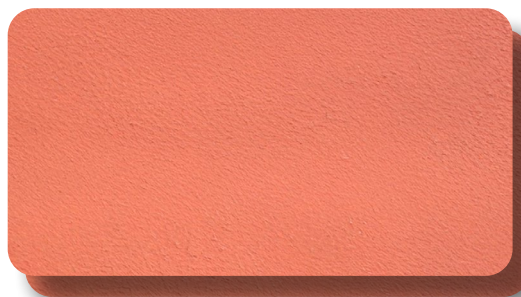
Celebrate a life event or honor a loved one, special occasion, or cherished memory with a commemorative brick, all while supporting the MSU Radiology Healing Gardens. Purchase of bricks are eligible for tax deductibility, and all proceeds will be invested into the E. James Potchen Radiology Healing Gardens Endowment Fund (learn more about how endowments work at givingto.msu.edu/endowments). Your support will help ensure the MSU Radiology Healing Gardens will continue to provide a calming environment for visitors, patients, students, and employees for generations to come!

8" X 4" Brick: \$250

8" X 8" Brick: \$1,000

Max 14 characters per line including spaces, punctuation, and optional symbol(s). Each symbol uses 2 characters (use double gray characters below to indicate desired location of symbol).

Weather permitting, bricks are installed last week of May, July, or September (cutoff is one month prior). Bricks will be added to the main pathway in a location at the discretion of MSU Radiology. Bricks cannot be used for advertising & messages are subject to approval.



(max 3 lines)



(max 5 lines)

OPTIONAL SYMBOLS (each symbol uses 2 characters)

%%	??	##	\$\$	<<	>>
					
@@	**	//	\\]]	[[
					

Contact Person: _____

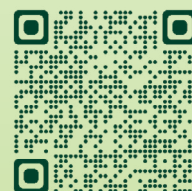
Phone: _____

Email: _____

Street Address: _____

City, State, Zip: _____

Learn about all the ways you can support the Healing Gardens!
go.msu.edu/RadGardenGiving



Make checks payable to **MICHIGAN STATE UNIVERSITY** and include "Radiology Garden Brick" in the memo. Mail or drop off forms and checks to MSU Radiology, 846 Service Road, East Lansing, MI 48824